

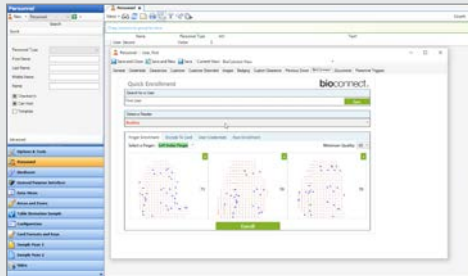
C•CURE Solutions

Suprema Biometric Readers Integration



Features That Make a Difference:

- Simply manage one user record for both standard access control and biometric access
- Quick and easy fingerprint and face enrollments through BioConnect
- Flexible operating modes can be tailored to fit your security needs
- Benefit from 1:N (Finger Only) verification
- Ability to mix and match fingerprint and facial recognition
- Any unit can function as an enrollment device



BioConnect accessed in C•CURE 9000 with the BioConnect tab (v3.7)

Biometric readers add a level of security by identifying people through unique characteristics such as a fingerprint or facial features. The demand for biometric readers has been on the rise as security professionals strive to keep employees, visitors, and property more secure without compromising user convenience. Software House partners with BioConnect to bring you a suite of Suprema biometric readers fully integrated into the C•CURE 9000 security and event management system.

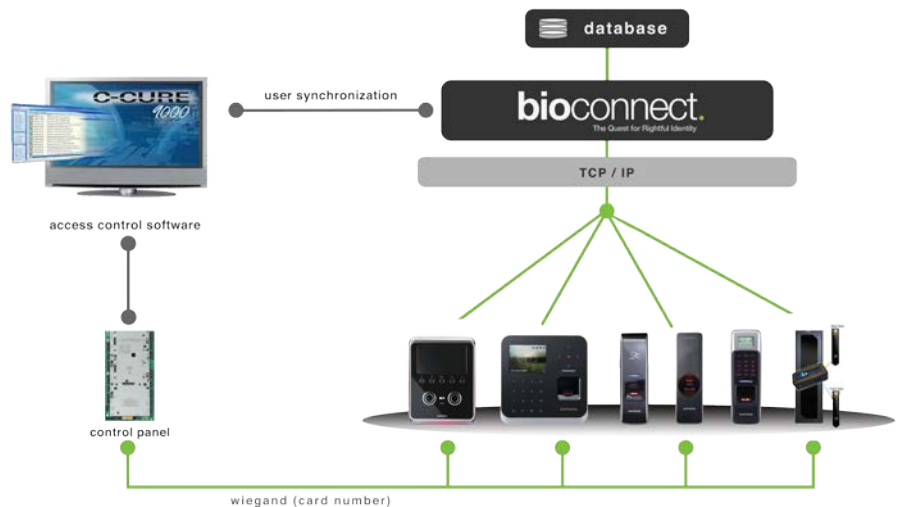
The Standard for Biometric Integrations

BioConnect's identity platform allows for Suprema readers to seamlessly integrate into C•CURE 9000. The identity platform syncs the two systems and provides fingerprint or face enrollment and flexible operating modes, whether you are looking for a fingerprint and PIN, fingerprint and card, or any other combination of multi-factor authentication to protect your business.

BioConnect is on a quest for rightful identity, making deployment and use of biometrics easier than ever. With simple and scalable features and functionality, BioConnect's identity platform empowers enterprises to leverage credentials that are completely unique to each individual (fingerprint, face etc.) delivering greater security, assurance and convenience every day.

- Simple graphical user interface much like social media functionality
- Enterprise-class data replication
- Large-scale advanced template management capabilities
- Full device management capabilities
- Active directory integration

Suprema biometric readers in the integration include: FaceStation, BioStation A2, BioStation 2, BioEntry Plus, BioEntry W and BioLite Net. These indoor and outdoor biometric readers are durable, easy to install and feature the leading biometric technology and algorithms.



FaceStation

A smart face recognition terminal, the FaceStation is a perfect combination of beauty and performance. It's packed with a wide array of features and functions which can be accessed through an intuitive, user-friendly GUI. It can be used in both standalone or network environments.

- Premium face recognition IP terminal
- 4.3" WVGA touchscreen LCD with intuitive GUI
- 1:1,000 matches in 1 second
- Utilizes Power over Ethernet (PoE)
- Versatile interfaces including: TCP/IP, WiFi, RS485, RS232, Wiegand, and USB
- Card option: MIFARE

BioStation 2

BioStation 2 is an evolution of the BioStation with a sleeker design, larger display screen and refreshed user interface. A very versatile device, the new OP5 fingerprint sensor can read a wet or dry finger making it ideal for both indoor and outdoor settings.

- IP65 certified dust and water protection
- 1:20,000 matches in 1 second
- 2.8" color LCD with intuitive GUI
- Utilizes Power Over Ethernet (PoE)
- Versatile interfaces including Wi-Fi, TCP/IP and Wiegand
- Card options: HID Proximity, MIFARE/DESFire, Felica, NFC, iCLASS SE

BioEntry Plus

Integrated with both fingerprint and proximity card access, BioEntry Plus IP-based fingerprint access control device covers a full range of applications from a simple standalone door control to complex networked access control systems.

- IP-based fingerprint access control device
- Easy to install
- Integrated with both fingerprint and proximity card
- 1:2,000 matches in one second
- Slim and elegant mullion design for installation on a door frame
- Easy operation and management with built-in RF card reader for different user authentication modes (fingerprint and/or card) MIFARE/DesFire, Prox, iCLASS

BioEntry W2

Featuring a vandal-resistant structure and exceptional durability under harsh environments, BioEntry W2 is ideal for outdoor installations.

- Ideal for harsh environments and outdoor installations
- IK08 vandal-resistant structure constructed from heavy-duty Lexan™ resin

- 1:150,000 matches in 1 second
- Utilizes Power over Ethernet (PoE)
- Versatile interfaces including: TCP/IP, RS-485 and Wiegand
- Card options: MIFARE, HID iCLASS, DESFire, FeliCa, HID Prox, EM and NFC

BioLite Net

With its rugged IP65-rated waterproof structure, BioLite Net offers exceptional durability in extreme conditions and is ideal for both indoor and outdoor environments.

- World's best fingerprint recognition technology
- 1:2,000 matches in 1 second
- Graphic LCD with T functions
- IP65-certified dust and water protection
- Versatile interfaces including: TCP/IP, RS485, and Wiegand
- Card option: MIFARE

BioConnect Specifications

BioConnect Server	
Minimum Requirements	10GB HD space, 2GB RAM, 2GHz CPU or greater
Operating System Support	Windows 7, Windows 8, Windows Server 2012 R2
Database	MS SQL Server 2012, SQL Server 2012 Express
Encryption (BioConnect to Reader)	AES 256
Biometric Template Size	384 bytes each, minimum of three templates per user recommended
Template-on-Card Support	Yes, MIFARE and iCLASS cards only
C•CURE 9000 Versions	v2.1, v2.2, v2.3, v2.4, v2.5

SOFTWARE HOUSE

From Tyco Security Products



	Face Station	BioStation 2	BioLite Net	BioEntry W2	BioEntry Plus
Product Code	FSM	BS2 BS2OHPW (Prox) BS2OIPW (iCLASS) BS2OMPW (MIFARE)	BLNOC	BEW2-OAP (Multiclass) BEW2-OHP (HID) BEW2-ODP (EM)	BEPHOC (Prox) BEPMOC (MIFARE) BEPLOC (Finger only)
CORE FUNCTIONS					
Application	Time & Attendance Access Control	Time & Attendance Access Control	Access Control	Time & Attendance Access Control	Access Control
Authentication Mode	Face/Card/PIN	Finger/Card/PIN	Finger/Card/PIN	Finger/Card	Finger/Card
Card Options	13.56 MHz MIFARE	125KHz EM 125KHz HID Prox 13.56 MHz MIFARE 13.56 MHz iCLASS SE	13.56 MHz MIFARE	125 KHz EM 125 KHz HID Prox 13.56 MHz MIFARE 13.56 MHz iCLASS SE	125 MHz Prox 13.56 MHz iCLASS 13.56 MHz MIFARE
CAPACITY					
Template Capacity	10,000 (1:1) 1,000 (1:N)	1,000,000 (1:1) 40,000 (1:N)	10,000 (1:1)	1,000,000 (1:1) 200,000 (1:N)	10,000 (1:1)
Max. User	10,000	500,000 (1:1) 20,000 (1:N)	5,000	500,000 (1:1) 100,000 (1:N)	5,000
Log Capacity	1,000,000 (text) 10,000 (image)	3,000,000	50,000	1,000,000 (text)	50,000
INTERFACES					
TCP/IP	Yes	Yes	Yes	Yes	Yes
RS-485	2 channels	2 channels	1 channel	1 channel	1 channel
RS-232	Yes	Yes	-	-	-
Weigand	Yes	Yes	Yes	Yes	Yes
TTL I/O	4 inputs	2 inputs	2 inputs	2 inputs	2 inputs
Built in Relay	2	1	1	1	1
Other	-	USB	-	-	-
HARDWARE					
CPU	6667 MHz RISC x 1 1.1 GHz DSP x 1	1.0 GHz RISC	533 MHz DSP	1.2 GHz Quad Core	533 MHz DSP
Memory	4GB Flash + 512 MB RAM	8GB Flash + 128 MB RAM	8 MB Flash + 16 MB RAM	2GB Flash + 256 MB RAM	8 MB Flash + 16 MB RAM
LDC Display	4.3" WVGA touchscreen	2.8" graphic LCD	128 x 64 graphic LCD	-	-
LED Indicator	Multi-color LED	Multi Color LED	Multi-color LED	Multi-Color LED	Multi-color LED
IP Rating	-	IP65 (outdoor)	IP65 (outdoor)	IP67, IK08	-
Tamper	Switch	Supported	Switch	Supported	Switch
PoE	Yes	Yes	-	-	-
Operating Voltage	12V DC	12V DC	12V DC	12V DC	12V DC
Dimensions	5.2 x 6.5 x 2.4 in	5.6 x 5.7 x 1.8 in	2.4 x 7.3 x 1.6 in	2 x 6.8 x 1.7 in	2 x 6.3 x 1.5 in

Related Products



C•CURE 9000



iSTAR Edge



iSTAR Ultra



iSTAR Ultra SE

Approvals

