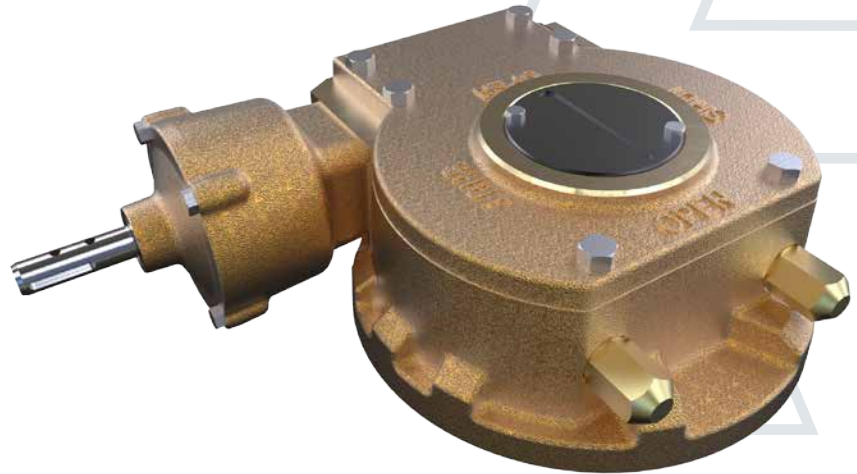


rotork®

Gears



Bronze worm gears for steam distribution applications in manholes and vaults

The BR series gear operators are manufactured from high quality cast aluminum bronze and stainless steel materials and designed for extended life operation of valves in corrosive manhole and vault steam distribution environments where road salts, standing water and elevated temperatures are common.

Cast bronze brackets with super duplex fasteners are available to ensure that the entire assembly is able to withstand the harshest environments.

Product Availability

BR series gears are available on new valves or as retrofit kits for existing valves.

Environmental Specification

- Temperature range up to 200 °C (+392 °F)
- IP68

BR Series

Bronze worm gears

Material Specification

Description	Material
Gear case / top cover plate	Cast Bronze C95800
Hand wheel / op nut	Cast Bronze C95800
Input shaft	Monel (Super Duplex with PR unit)
Fasteners	Super Duplex
Position indicator	H59-1 BRASS
Quadrant	Bronze C95800
O-rings	Viton
Grease	High temperature grease
Gasket	High temperature silicone sealant
Stop bolts	Super Duplex
W nut	HPb58-3 BRASS
Stop bolt washers (O-ring)	Viton

Type	Ratio	Torque Nm (lbf.in)		M.A. ±15%	Max.Stem Height mm (inch)	Output Flange	Bore Max. Rect.Key	Max. Square Bore AF	Weight kg (lbs)
		Output	Input						
BR550	34 : 1	1,000 (8,851)	83 (738)	12	80 (3.15)	F/FA07 - F/FA10 - F/FA12 - F/FA14	45 (1.77)	38 (1.50)	11 (24)
BR1250	55 : 1	3,250 (28,765)	171 (1,514)	19	92 (3.62)	F/FA10 - F/FA12 - F/FA14 - F/FA16	65 (2.56)	50 (1.97)	24 (53)
BR1950/PR4	217 : 1	7,000 (61,955)	106 (939)	66	114 (4.48)	F/FA12 - F/FA14 - F/FA16 - F/FA25	80 (3.15)	60 (2.36)	44 (97)