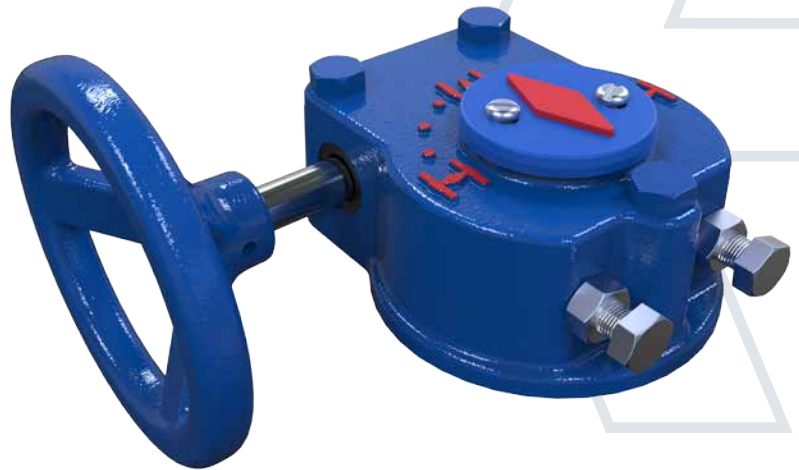


rotork®

Gears



Manual Quarter-turn Gear Operators

The QTW150 gearbox has been designed with simplicity in mind, resulting in a robust design with manufacturing optimised to deliver reliability and consistent performance. The QTW150's simple, rugged construction makes it an ideal choice for quarter-turn valve applications.

Application

The QTW150 quarter-turn worm gearbox is intended for the operation of ball, butterfly, plug and any other quarter-turn valves. These gear operators are well suited for applications in waterworks, chemical, power, HVAC and most general industrial applications.

QTW150 Gearbox

New Hand Operated Quarter-turn Worm Gearbox for use in the Water and Gas pipeline markets

Features

- Manual input
- PTFE thrust bushes
- Cast iron housing and cover
- Ductile iron quadrant
- Stroke 0-90° ($\pm 5^\circ$ adjustable at open and closed)
- Adjustable indicator
- Protected steel input shaft and fasteners
- Silicon sealed stop bolts
- Self locking gearing

Environmental Specification

- IP65 minimum sealed unit
- -20 to +120 °C (-4 to +250 °F) standard temperature range

Options

- Padlockable

Model	Torque Nm (lbf.in)	Ratio	MA ($\pm 15\%$)	Input Torque Nm (lbf.in)	Handwheel Size mm (inch)	Stem Max Bore+rect. B5 key mm (inch)	Max Square mm (inch)	Max DD mm (inch)	Max Stem Height mm (inch)	Output Flange	Weight kg (lbs)
QTW150	150 (1332)	40:1	10	15 (132)	100 (4)	22 + 6K (0.8125 + 0.25K)	20AF (0.75AF)	28 x 20AF (1.0625 x 0.75AF)	45 (1.75)	F/FA05-F/FA07	2.07 (4.56)

QTW150 Gearbox

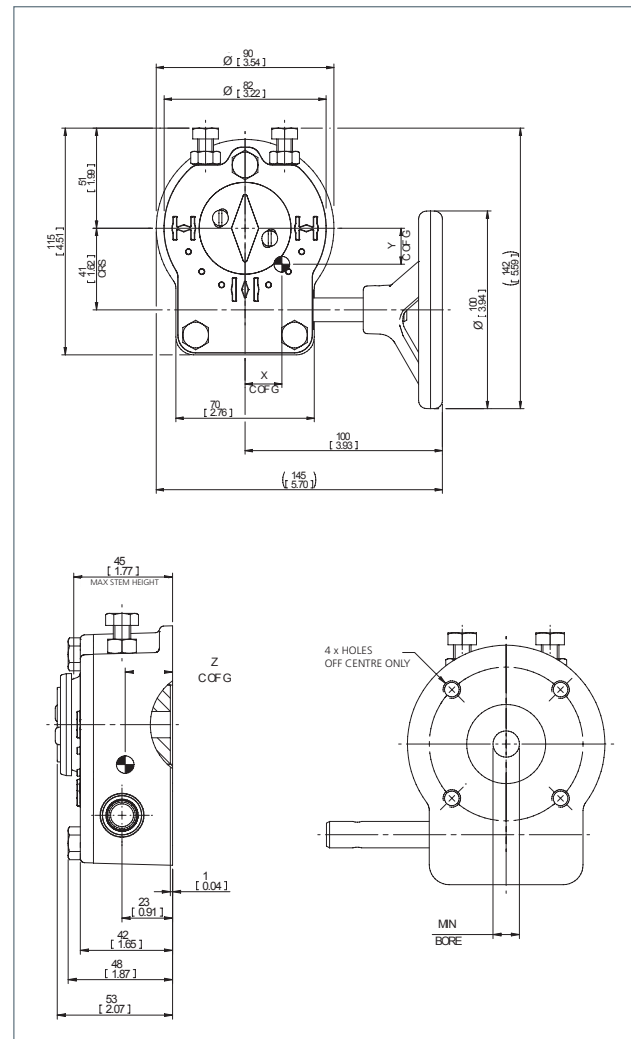
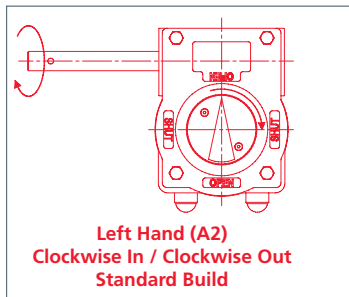
New Hand Operated Quarter-turn Worm Gearbox for use in the Water and Gas pipeline markets

Material specification for Rotork QTW150 Gearbox

Description	Material
Lip Seal	Nitrile Rubber
O-Ring	Nitrile Rubber
Coil Pin	Alloy Steel
Flanged Bush	PTFE Steel-Backed
Hexagon Head Screw	Zinc Plated Steel
Hex Nut	Zinc Plated Steel
Input Shaft	Zinc Plated Steel
Worm	Carbon Steel
Indicator	Plastic
Gearcase	Cast Iron
Cover	Cast Iron
Quadrant	Ductile Iron
Handwheel	Cast Iron
Button Head Screw	Nickel Plated Steel
Slotted Pin	Alloy Steel
Grease	EP Grease

Note: Due to the company's policy of continuous improvement, Rotork Gears reserves the right to change specification details without prior notice.

Input Shaft Projection



A full listing of the Rotork sales and service network is available on our website.