

RDK Ruggedized Host Parts List

<p>Rocky Patriot RK8-I Rugged Notebook Computer</p>		
<p>Antenna</p>	<p>550-7025-000</p>	
<p>Li-Ion Battery (11.1V/6600mAH)</p>	<p>500-0137-000</p>	
<p>Auto Switch A/C Adapter - 110/220V (90 W)</p>	<p>500-0138-000</p>	
<p>Removable Hard Disk Drive SATA (160 GB)</p>		
<p>Removable DVD ROM</p>		
<p>RAELink Device Bay</p>		
<p>Software CD(s)</p>		
<p>Carrying Case</p>		

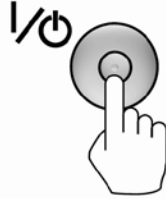
RDK Ruggedized Host Start Up Guide

1. Open Computer



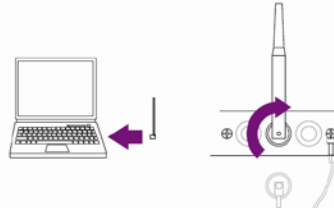
Open the computer and raise the screen.

2. Turn On Computer



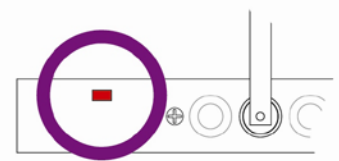
Press the power button on the computer to start it up.

3. Deploy Host Antenna



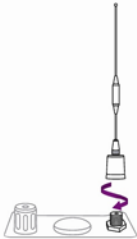
Unscrew the cover from the antenna port. Screw the antenna onto the port. Turn the antenna so that it stands upright.

4. Check Mode.



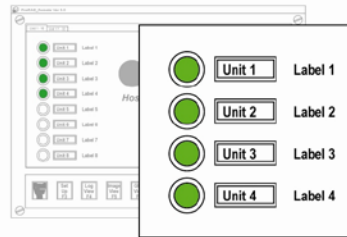
Make sure the modem is operating by examining the LED on the bay. It should be glowing red.

5. Attach AreaRAE Antennas



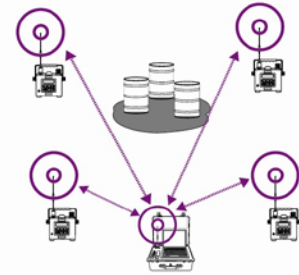
Screw the antenna onto each AreaRAE's antenna connector.

6. Verify Communication



Verify ProRAE Remote communication: One light for each AreaRAE should show green on the computer screen.

7. Deploy AreaRAEs



Deploy AreaRAEs to remote field locations.

Make sure that the base station is in a safe area.

Troubleshooting AreaRAE Network That Is Not Communicating

1. Make sure batteries for RDK Ruggedized Host, remote monitors, and modems are fully charged.
2. Make sure all modems are turned on:
 - a. RDK Ruggedized Host device bay LED should be glowing red.
 - b. AreaRAE detectors' "Radio" LED should be on.
 - c. Check RAELink2 and/or RAELink3 linked portable monitors.
 - Confirm RAELink3 is on by looking at LCD screen.
 - LED light on RAELink2 should be on.
3. Confirm SETUP [F3] settings in ProRAE Remote:
 - a. Make sure "ComPort to RAELink" is set to "Com2."
 - b. Make sure the "Begin polling on startup" check box is selected .
 - c. Make sure the "Master Interval" value is set to "2" seconds.
4. Make sure all remote monitors have unique Unit IDs:
 - a. Check the "Set Unit ID" setting in remote monitors.*
 - b. For portable monitors linked with a RAELink modem, the Unit ID is set either on the remote monitor or on the RAELink modem.*
5. Make sure all modems are set on the same Network ID:
 - a. Remote monitors and RAELink modems must be on same Network ID
 - b. The Ruggedized Host modem must match this network ID.

Setting the Network ID of the RDK Ruggedized Host

1. Power ON the RDK Ruggedized Host.
2. Launch HyperTerminal (Programs->Accessories->Communications->Hyper Terminal).
 - a. Name the new connection and choose COM2 for "Connect Using."
 - b. Set the communication parameters as follows:
Bits per second: 19200; Data bits: 8; Parity: None; Stop bits: 1,
Flow control: XON/XOFF
3. Remove the screw on RAELink device bay and use a pin to press the button underneath (LED will turn green).



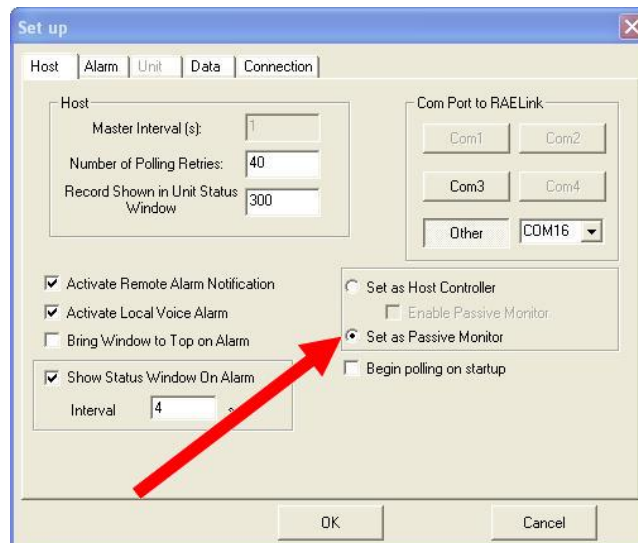
4. Hit option "5" to enter "Multipoint Parameters."
 - a. Enter "6" to access "Network ID"
 - b. Enter a new network ID between 11 and 4095 (except 255) and then press the "Return" key. The new network ID is displayed. Press "ESC" to exit to the main menu; then close the Hyper Terminal program.

Note: When you close the HyperTerminal program for the first time, it asks you to save the file. Save the connection you just set up for future use. Next time you start the HyperTerminal program, you can just open this file.

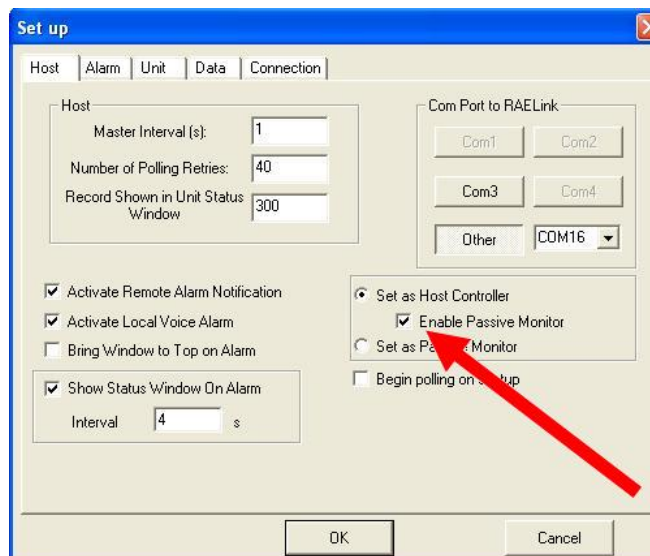
Warning: All RAELink modems (including those embedded in host controllers or inside remote monitors) must have the same Network ID number programmed in order to communicate on the same network.

Switching from Host Controller to Passive Monitor to view information from another local AreaRAE network

1. Follow the first three steps for setting of the Network ID above.
2. Hit option “0” (zero) to enter “Set Operation Mode.”
3. Set Operation Mode to option “3” (Point to MultiPoint Slave).
To change back to Host Controller, choose option “2” (Point to MultiPoint Master).
4. Set ProRAE Remote to Passive Monitor (hit the “Set Up F3” button):



5. Enable Passive Monitor on the host controller you wish to listen in on:



Note: The network ID of the host controller and passive monitors must match.