

JOWA USA

Bar Graph Meter with Digital Display

METRIMETER™

Features:

- Single tank instrument with digital and bar graph display
- Four input channels to monitor resistance-tape levels and temperature or overflow
- Five alarm indicators plus one fault indicator, and 3 relay outputs
- RS-485 serial interface
- Capable of remote alarm acknowledge and/or horn silence

Description:

The Metrimeter is a single tank instrument that directly interfaces with Metritape level and level / temperature sensors. It provides a 6-digit alphanumeric display, a 40-point bar graph display and six alarm and fault indicators. In addition, it may be used as a slave meter when connected to other systems. Through an extensive menu system, the meter may be set up and configured to match a customer's needs.

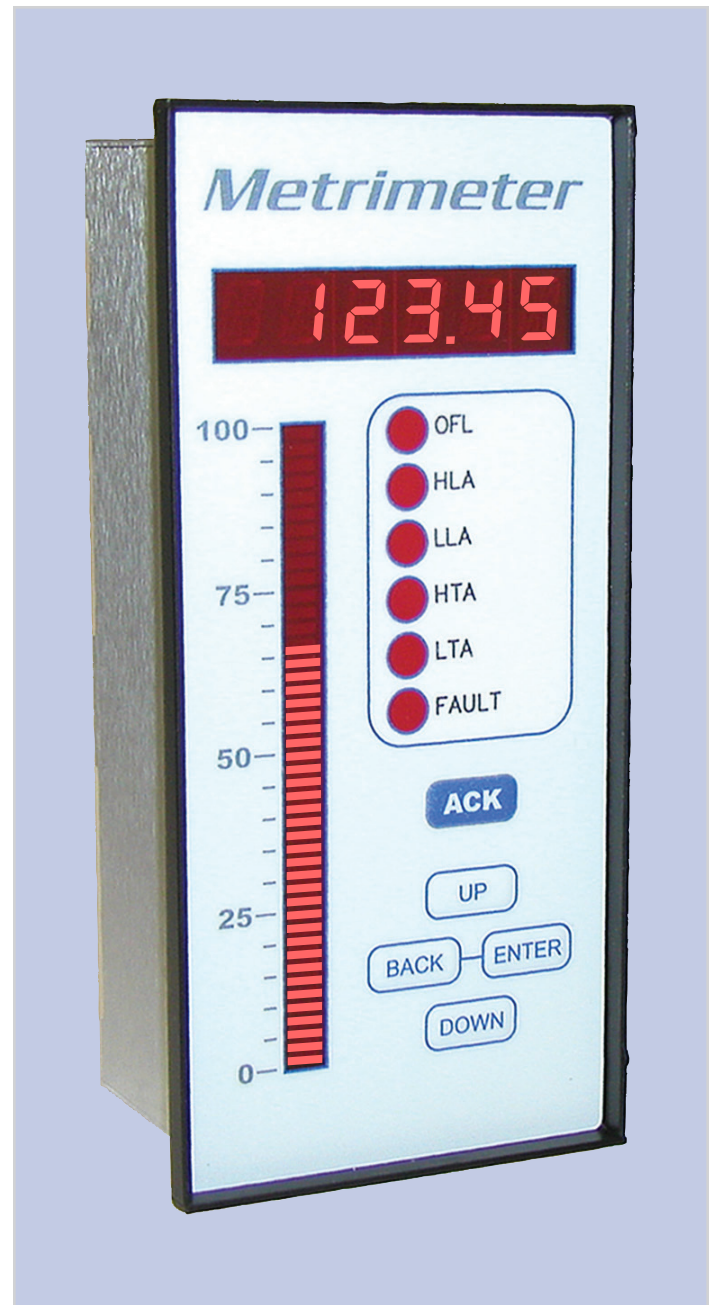
Specifications

Signal Inputs (Resistance): 4 Channels
Function

Channel 1	Level (full height)
Channel 2	Overflow Level (Metritape Sensor or Float Switch Contact Closure)
Channel 3	Upper Temperature (2 Temp sensors only) (1000Ω Platinum RTD)
Channel 4	Lower Temperature (1 and 2 temp sensors)

Maximum Resistance

Ch 1 & 2	40,000Ω
Ch 3 & 4	4,000Ω



Power Input:

Voltage:	90 - 260 VAC
Frequency:	47 - 63 Hz
Power Consumption:	8 watts

Environmental

Temperature operating:	0 to 50°C (32 to 122°F)
Temperature Storage:	-20 to 60°C (-4 to 140°F)

Specifications (continued)

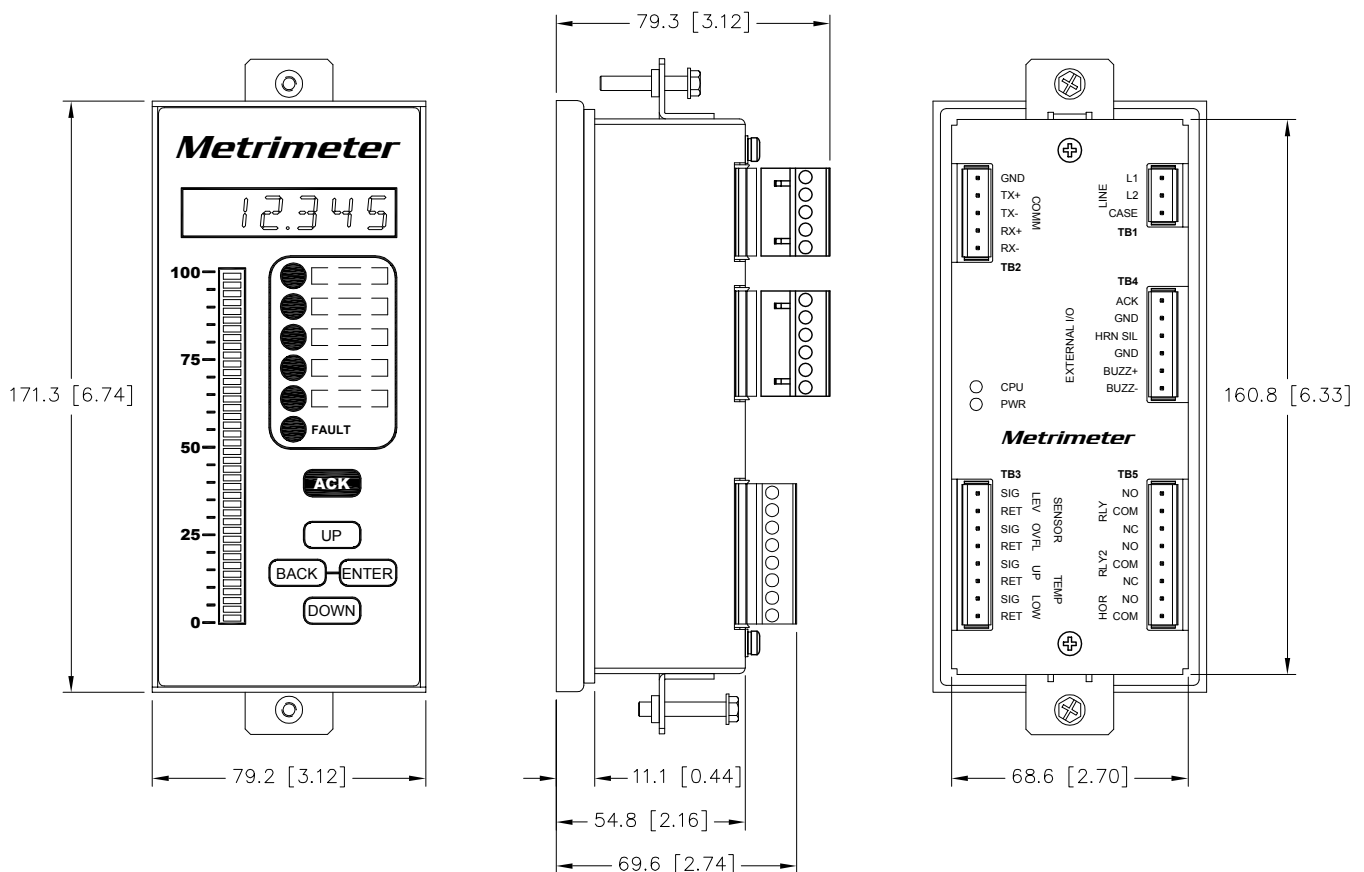
Humidity: 5% to 95% (relative, non condensing)
 Enclosure: IP55, NEMA 4 front (when used with gasket)
 Isolation (line to case): 2000 VRMS, 60 seconds
 Dielectric resistance: >100 MΩ @ 500 VDC

Relays

Form C: Quantity 2
 Form A: Quantity 1
 Contact Rating: 1A, 250 VAC

Level Format: Ullage, Sounding, Innage

Volume / Weight Table: 20 Points



Disclaimer:

This is not a specification and all information is provided in good faith. Since conditions of use are beyond the control of JOWA USA, Inc., the information contained herein is without warranty, whether expressed, implied or otherwise. Final determination as to the suitability, merchantability or fitness of any information, material or product for a particular purpose, or any patent infringement, is the sole responsibility of the user. JOWA USA, Inc. does not assume liability for injury arising from the use of the information, material or product, and assumes no liability for any damages, whether direct, indirect, consequential, special, incidental, punitive or otherwise. For additional information regarding JOWA USA, Inc.'s limited warranty, refer to the Terms and Conditions that are currently in effect.

