

Precision Stainless Steel Fuel Control Regulator

In today's stringent testing of engines, compressors and other equipment, precise control of fuel supply is critical to accurate test results. With its new Model 67 Precision Stainless Steel regulator line, Fairchild offers a tough and durable yet highly precise regulator designed for rigorous and versatile testing applications. The 67PPR has quick change and purging capabilities to facilitate the variety of fuel mixtures used in engine technology.

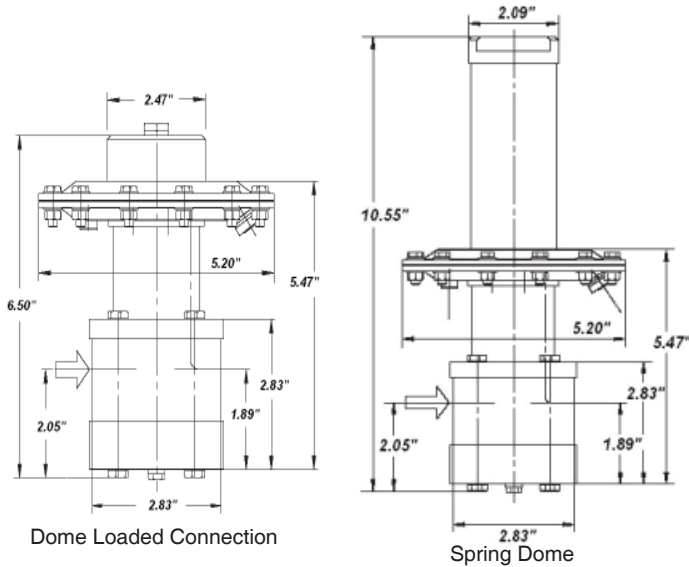
When your application demands high performance and accurate control, insist on the best — Specify Fairchild's New Model 67 Regulators.

NEW Stainless Steel Precision Fuel Control Regulator

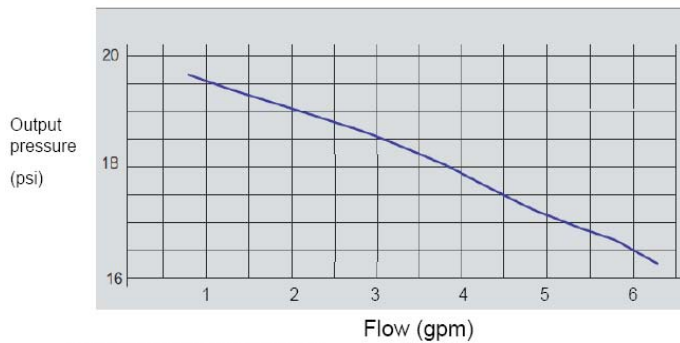
- F** High Accuracy with Extremely Low Droop Under Flow
- F** Reliable Fuel Supply to the Engine
- F** Full Corrosion Resistance for All Fuels and Mixtures
- F** No change in output with fluctuating supply pressure or downstream pulsation
- F** Allows Quick Fuel Changeover
- F** Washdown and Internal Purge Capability

The directly-controlled Model 67 stainless steel regulator precisely controls fuel pressures in ranges from minus 6 to 45 psi. The large diaphragm actuator with directly-controlled valve gives excellent response characteristics with very low hysteresis. High precision control is achieved by its force-balanced valve, with a newly developed patented smooth running seal system. Specially developed for the high precision and reliability requirements of modern engine test equipment, the M67 is suitable for all fuels such as gasoline, diesel, biodiesel (RME), aviation fuel, methanol, ethanol, petrol mixtures E5 to E100 and diesel mixtures B5 to B100.





Pressure/Flow (Liquid) Characteristics



Test Fluid is Glycol/water

Technical Data

- Supply Pressure (P1)**
150 psi (10 BAR) Max, 60 psi (5BAR) recommended
- Regulating Range (P2)**
-6 to 45 psi (-0.4 to 3 BAR)
- Process Connections**
1/2 NPTF internal thread / G1/2
- Weight**
9 lbs
- Temperature**
-4 °F to +265 °F (-20 °C to 130°C)
- Testing and Inspection**
According to IEC 60534-4
- Pressure Tightness**
Bubble tight sealing category VI
- Materials of Construction**
Body and Trim Stainless Steel
Diaphragms and Seals PTFE, FFKM
Regulator Seat Perfluoroelastomer FFKM-Kalrez / Chemraz

Ordering Information

- Catalog Number** 671
- Pressure Range**
-6 to 45psi [-0.6 to 3 BAR] 4
- Port Size**
1/2 4
- Port Thread**
NPT N
BSPT U
- Flow Capacity**
6 gpm (1200 kg/hr) I
- Body Materials**
Stainless Steel S
- Seat Seal**
FFKM K
- Diaphragm Material**
PTFE T
- Product Configuration**
Dome Loaded Connection (fig 1) P
Spring Dome (fig 2) S
With Dome Pressure Regulator (fig 3) R
With I/P Transducer (fig 4) T
With Flame Proof I/P Transducer (fig 5) X

