

## CVS Controls Ltd. Series V-108 High Pressure Ball Valve

The CVS Controls Series V-108 is a 2 inch 2000psi High Pressure Ball Valve.

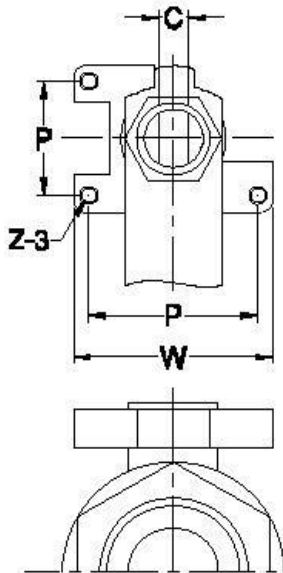
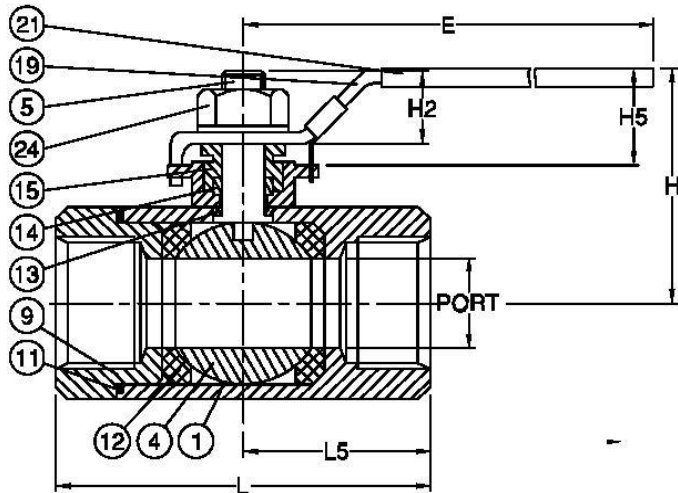
### Features:

- Investment cast body construction
- 2 Piece Body Design
- Reduced Port – 2" design
- Standard CF8M Body
- Reinforced PTFE Seats
- ISO 5211 Mounting Flange
- Seal Welded Body
- Blow out proof stem construction
- NPT Threaded End Connections
- Economical
- CRN Certified



CVS Series V-108 - 2 Inch

## SPECIFICATIONS – 2 Inch, Reduced Port



2" Series V-108

Size	2 Inch	Reduced Port
End Connection	NPT Threaded Ends	
Working Pressure	2000 psi	
Temperature Limits	-40°C to 180°C	-40°F to 356°F
<b>STANDARDS</b>		
Design	ASME/ANSI B16.34 - latest	
Materials	ASTM	
Pressure Rating	API 598	
<b>CERTIFICATIONS</b>		
CRN		
Quality Assurance	ISO 9001	

Materials		
No	Description	Material
1	Body	CF8M
4	Ball	CF8M
5	Stem	SS316
9	End Cap	CF8M
11	Body Seal	PTFE
12	Seat	RTFE
13	Thrust Washer	PTFE
14	Stem Packing	PTFE
15	Gland	SS304
19	Handle	SS304
21	Handle Cover	PLASTIC
24	Handle Nut	SS304

Dimensions - mm											
Size	Port	L	L5	E	H	H2	H5	C	Z	P	W
2"	38.3	137	68.0	180	94	20.0	40.0	9.3	W1/4-20	35.6	50.0
Dimensions - In											
2"	1.5	5.39	2.67	7.08	3.70	0.78	1.57	0.36	W1/4-20	1.40	1.96

CVS Controls Ltd. strives for the highest levels of quality and accuracy. The information included in this publication is presented for informational purposes only. CVS Controls Ltd. reserves the right to modify or change, and improve design, process, and specifications without written notice. Under no circumstance is the information contained to be interpreted to be a guarantee/warranty with regard to our products or services, applicability or use.

Selection, use and maintenance are the sole responsibility of the end user and purchaser. CVS Controls assumes no liability for the selection use and maintenance of any product.