

Discover 750 Series

700 TVL 960H Indoor/Outdoor Vandal-Resistant Mini-Domes



Features That Make a Difference:

- Sony image sensor provides best low-light performance
- 700 TVL High Resolution
- Wide Dynamic Range (WDR) for clear images even under challenging environments
- 2.8-10mm or 9-22mm / F1.2 varifocal auto iris lens
- IR illuminators for operation down to 0 lux scenes (Outdoor only)
- True Day/Night (TDN) mode
- 3-axis gimbal for easy positioning
- Quick-install adapter for easy installation (Indoor only)
- Vandal-resistant and IP-rated outdoor housing
- Service jack with second video output for camera setup
- 15 programmable privacy zones
- 12VDC/24VAC

The Discover 750 Series Mini-Domes, both indoor and outdoor models, provide exceptional performance, ease of installation, and flexible configuration and mounting options. With excellent Wide Dynamic Range (WDR), True Day/Night (TDN) mode and precise color reproduction, the mini-domes accurately capture all of the critical details in a scene including highlights, shadows and everything in between while maintaining image quality and color accuracy.

Leveraging image sensor technology, the Discover 750 Series Mini-Domes require just 0.1 lux of illumination to produce usable, color images at a full 30 frames per second. The cameras are the natural choice in both indoor and outdoor environments.

The sensor technology eliminates image-compromising visual noise (i.e. glare, reflections) yielding more efficiently compressed images and saving valuable storage space on DVRs and video networks.

With an advanced, pivoting, 3-axis gimbal, the cameras can be easily positioned at exactly the right angle whether mounted on ceilings or walls. Designed for fast and efficient installation with a patent-pending, quick-install adapter, these mini-domes can be installed with minimum effort. Accessible lenses allow critical focus and focal length adjustments. The outdoor mini-dome is available with optional integrated IR illuminators for operation in situations where no visible lighting is present (0 lux).

The outdoor mini-dome includes a high-impact, vandal-resistant dome housing built to withstand the harshest environments. The camera housing is IP66-rated for complete protection against dust and other debris, and against water damage. An optional heater provides extra protection in cold weather environments.

Specifications

Operational

Imager	Sony 1/3" Super HAD-II Wide Dynamic
Horizontal Resolution	700 TVL
Active Pixel Count (H x V)	758 x 540
Lens (Varifocal Auto Iris)	2.8-10mm: F1.2-2.4; 9-22mm: F1.4
Scanning Frequency	60Hz (NTSC); 50Hz (PAL)
Min. Scene Illumination	Day mode: 0.1 lux (50IRE, F1.2, 30fps) Night mode: 0.3 lux (non-IR domes), 0 lux (outdoor IR dome)
Iris Control	DC auto
S/N Ratio	>48dB
Synchronization	Internal or line lock
Shutter Speed	1/60-1/30, 720 sec (NTSC) 1/50-1/30, 720 sec (PAL)
IR Illuminator	850nm/20m (Outdoor only)

Controls

AGC	Day: 0-60dB, Night: 0-60dB
Wide Dynamic Range	102dB typical, 120dB max.
AES	Yes
BLC	Full range
White Balance	ATW, AWB, Manual
Auto White Balance Range	2800K-9100K (normal); 2000K-11000K (extended)
Day/Night	True Day/Night
Digital Zoom	1x - 8x
Brightness	Adjustable
Sharpness	Adjustable
Noise Reduction	3D motion adaptive
Privacy Zones	15 programmable
Mirror	Horizontal, vertical or both
Onscreen Display	Camera ID and menus

Connectors

Video Output	Composite
--------------	-----------

Electrical

Voltage	DC 10.8V-13.3V, AC 19.2V-28.8V
Power Consumption	2.2W (max.); 5.1W (max.) with IR and True Day/Night on

Mechanical

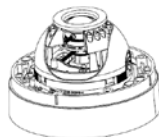
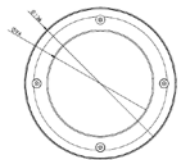
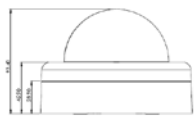
Dimensions	
Indoor	120.2 x 98.7 mm (4.7 x 3.9 in)
Outdoor	136 x 94.2 mm (5.35 x 3.7 in)
Weight	
Indoor	270g (0.60 lbs)
Outdoor	560g (1.23 lbs)
Housing Material	
Polycarbonate	
Housing Color	
White	RAL 9003, Pantone® 705
Black	RAL 9017, Pantone Process Black

Environmental

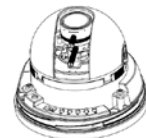
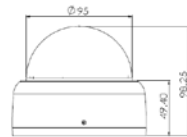
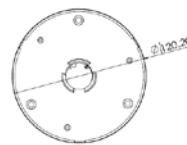
Operational Temperature	
Without Optional Heater	-10°C to 50°C (14°F to 122°F)
With Optional Heater	-40°C to 50°C (-40°F to 122°F)
Storage Temperature	
-20°C to 60°C (-4°F to 140°F)	
Relative Humidity	
.90% (non-condensing)	

Regulatory

IP Rating	IP66
Emissions	FCC: Part 15, Class B; CE: EN61000, Class B
Immunity	CE: EN50130-4
Safety	NTSC: UL60950 and CSAC22.2 No. 60950 PAL: IEC60950



Outdoor



Indoor

Ordering Information

Brand	Camera	Series	Dome	Color	Environment	Bubble	Lens	Infrared	Format
AD	CA	75	D	W = White B = Black	I = Indoor O = Outdoor	T = Tinted C = Clear	3 = 9-22mm Varifocal 4 = 2.8-10mm Varifocal 8 = 2.5-6mm Varifocal	R ¹	N = NTSC P = PAL

(1) Outdoor only

Accessories

Model	Description
ADCAHTRV	Heater Kit for Outdoor Mini-Dome

Related Products



ADTVR Series



victor

Approvals

